

LockBlox*iQ*
B R E E Z E

The new standard
in cooled locker
systems



 ZUPPLY.

Feature highlights

Efficient Cooling

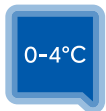
- ◆ Cooling adjustable between 0 and 10°C (at 30°C ambient temp.)
- ◆ Energy efficient cooling system with Eco-friendly refrigerant gas **R290**
- ◆ Insulating Low E glass
- ◆ Excellent insulation (polyisocyanurate foam)
- ◆ Adjustable self-closing doors
- ◆ Temperature adjustable per module

Function & Design

- ◆ Smooth edgeless glass doors
- ◆ Advanced RGBW LED lighting system
- ◆ Wall integration or stand alone
- ◆ Modular; extend seamlessly
- ◆ New designed electronic control

Operation

- ◆ Optimized shopping experience
- ◆ Easy replaceable cooling cassette, to optimize service and minimize downtime



TEMPERATURE



REFRIGERANT



EASY EXTEND



LIGHTING

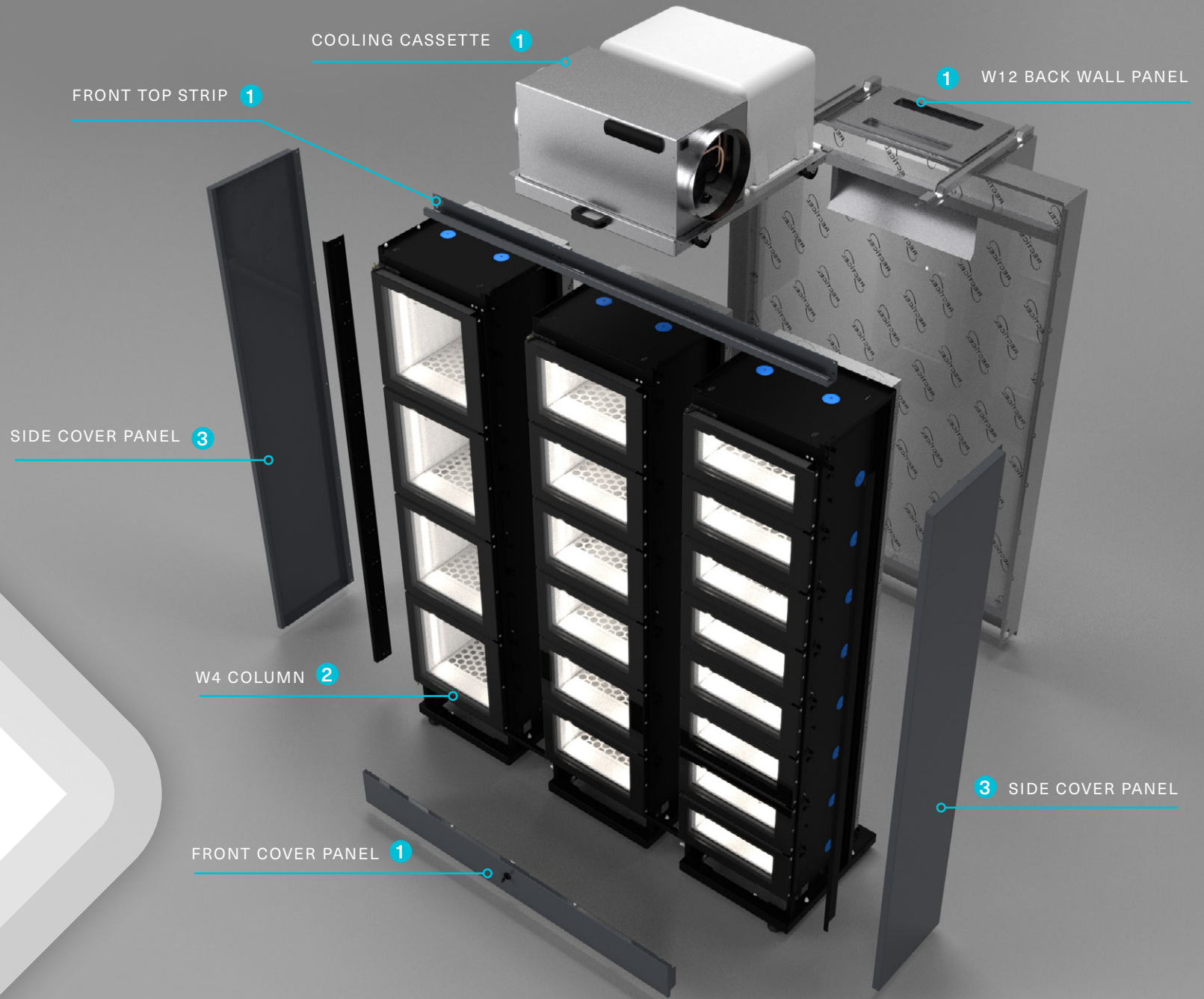


LockBlox*i*Q
BREEZE

MADE IN EU

ZUPLY.

Module built-up



Various box sizes

1 Module W12 completion kit - IQB.101

- ◆ W12 backwall panel
- ◆ Cooling cassette with controller
- ◆ Front cover panel (dark grey metallic)
- ◆ Front top strip (dark grey metallic)

2 W4 COLUMNS

- ◆ Column W4 with 8x H3W4 - IQB.0034
- ◆ Column W4 with 6x H4W4 - IQB.0044
- ◆ Column W4 with 4x H6W4 - IQB.0064
- ◆ Column W4 with 4x H3W4 + 2x H6W4 - IQB.3464

3 Side cover panel (set of 2) - IQB.102

- ◆ Incl. mounting strips (dark grey metallic)

Inside box dimensions (HxW)

H3W4	128 x 325 mm
H4W4	198 x 325 mm
H6W4	338 x 325 mm
Box depth (inside)	400 mm



IQB.0034

IQB.0044

IQB.0064

IQB.3464

Highly efficient cassette cooling system



The LockBlox iQ Breeze has highly efficient cassette cooling system placed on the top of the machine.

- ◆ Eco-friendly refrigerant gas **R290**
- ◆ Cooling between 0°C and 10°C (at $T_a = 30^\circ\text{C}$)
- ◆ Max energy consumption **202 Watt**
- ◆ Cooling capacity 880 Watt
- ◆ Easy to install or remove, due to guiding rails and low weight (25 kg)
- ◆ Hot gas defrost
- ◆ Separate temperature controller
- ◆ Spiro-tube (250mm) cover for guidance of in- and outgoing air

Edgeless glass doors

- ◆ Excellent insulating Low-E glass filled with Argon (U-value 1,25 W/m²K)
- ◆ Tempered glass; inside and outside
- ◆ Full glass front with black silk printed edge
- ◆ Integrated adjustable spring system for self-closing
- ◆ Easy to remove sealing gasket, for cleaning or replacement



Advanced RGBW LED Lighting

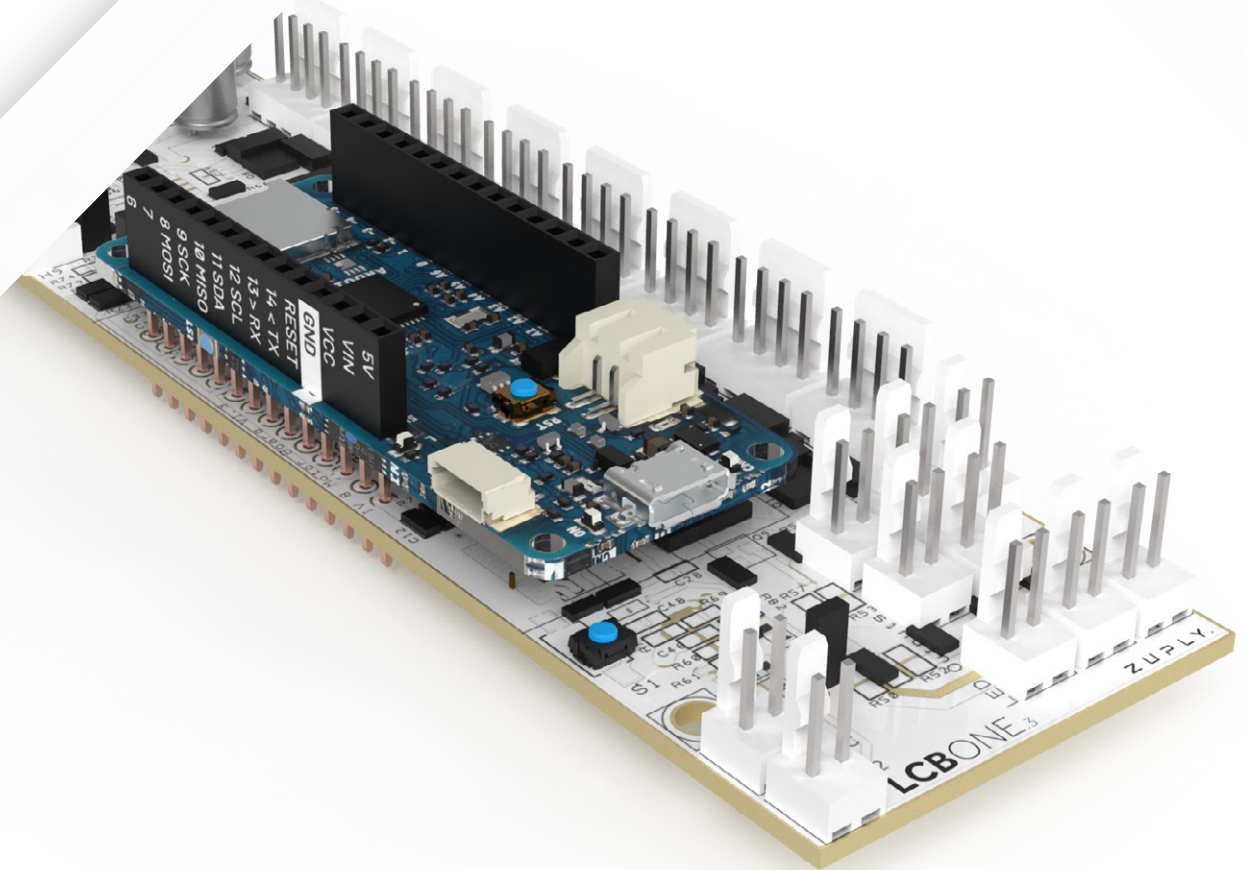


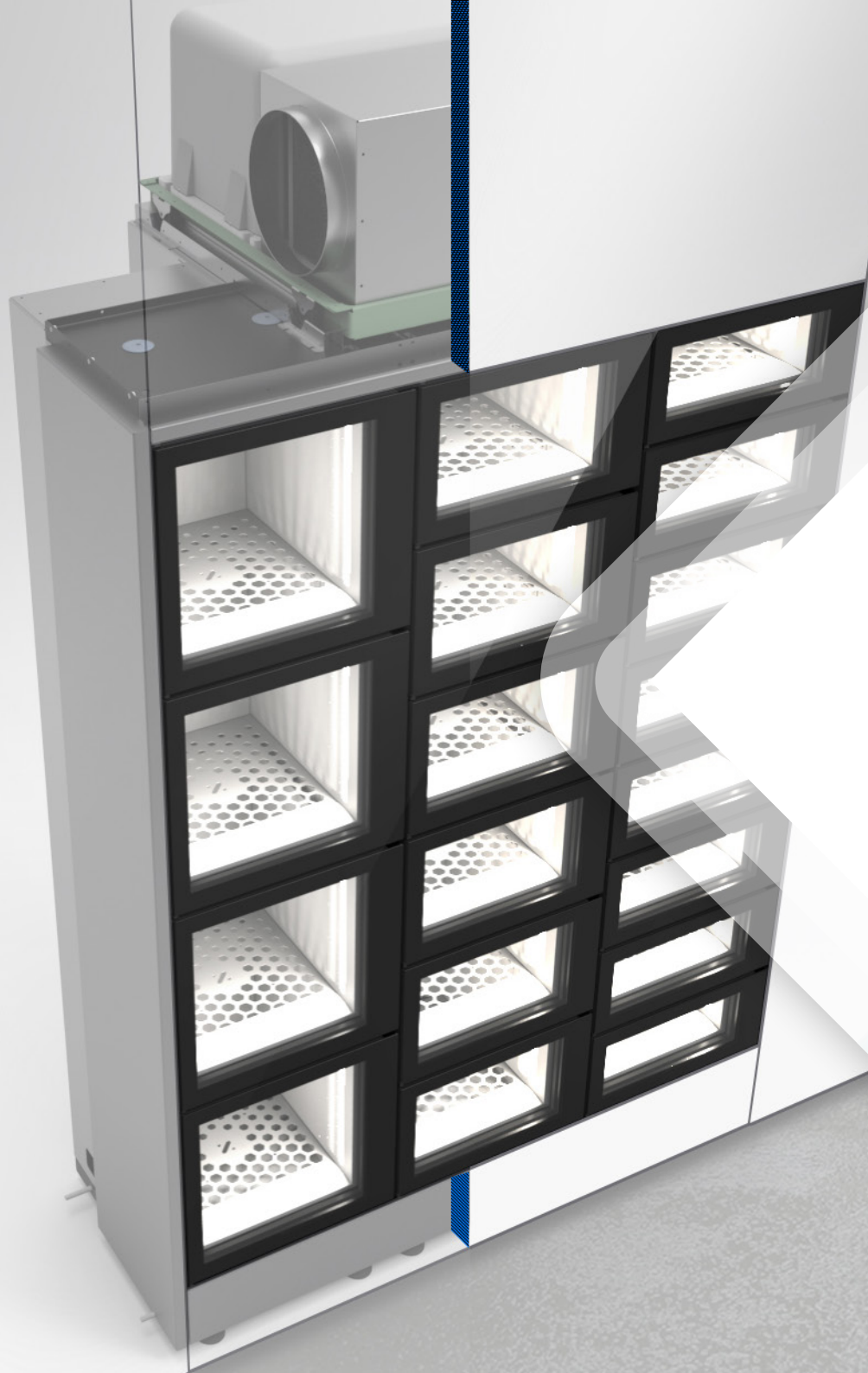
Default light package

- ◆ Box light green when door is opened or selected
- ◆ Box light blue for pick-up orders
- ◆ Box light red when door is not closed
- ◆ Sleep mode all blue

Improved electronics

- ◆ RS485 communication line, for quicker response
- ◆ Micro controller for one-click setup of box configuration
- ◆ Prepared for double NTC sensor (per column)
- ◆ Protection against overloading
- ◆ All electronics placed in boxes, for easy exchange and to minimize downtime
- ◆ Integrated RGWB controller
- ◆ Separated communication and power line





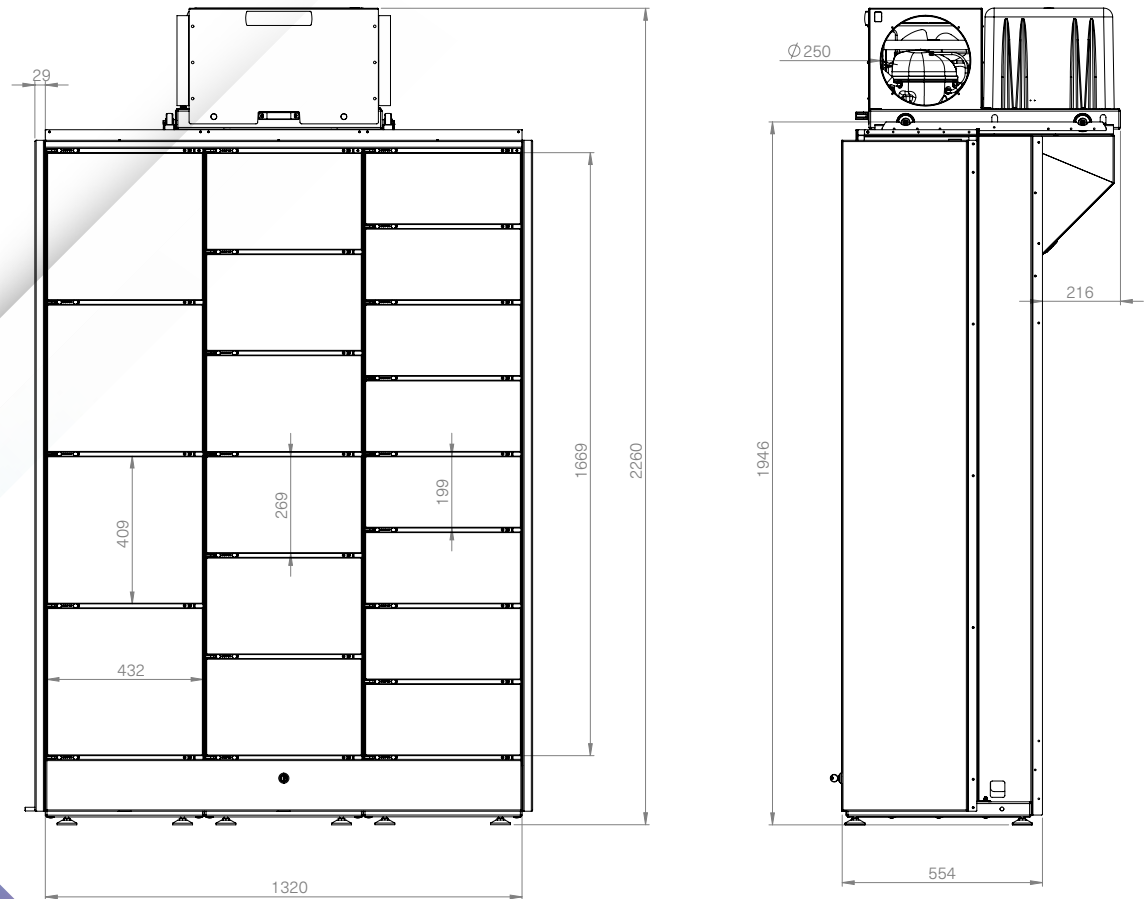
Designed to integrate

The LockBlox iQ Breeze is optimized for complete wall integration. This means that an interior builder has the opportunity to build in the machine tightly till the doors. Of course with a super sleek result!

Technical specifications

LockBlox iQ Breeze

Width (excl. side cover panels)	1320 mm
Height with cooling system	2260 mm
Height without cooling system	1946 mm
Depth	771 mm
Box depth (inside)	400 mm
Weight (depending on config)	290 ~ 320 kg
Weight cooling system	25 kg
Voltage	230V / 50Hz
Pmax - total	390 W
Pmax - cooling	202 W
Ambient outside temp.	max. 30°C (sheltered from direct weather influences)





- ◆ Butcher and poulterer
- ◆ Food catering
- ◆ Fishmonger's shop

Target markets



Zuply and Innovend are brands of Innovenda BV

Great interior integration